

INFER

pier

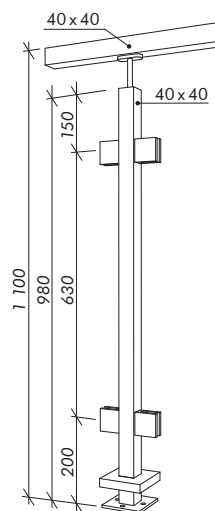
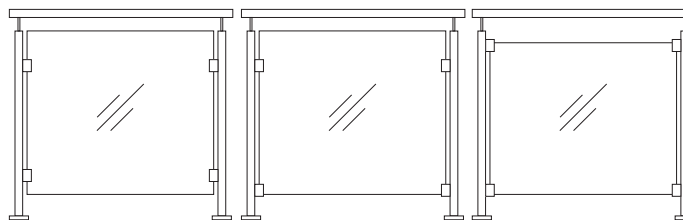
STARPSIENU
CENTRAS

CANOPIES RAILINGS FURNITURE



RAILINGS

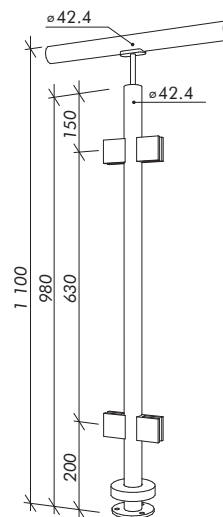
stainless steel | glass



POSTS FOR GLASS



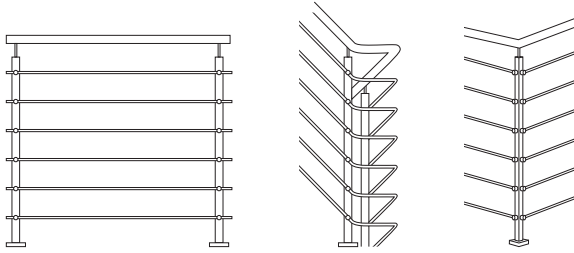
Height	1100 mm
Post □	40 x 40 mm
Glass thickness	10 - 17.52 mm
Material	Stainless steel
Surface finish	Satin



POSTS FOR GLASS

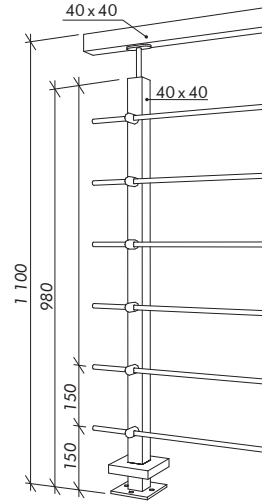
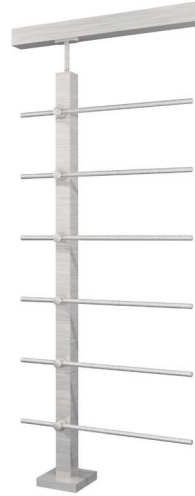
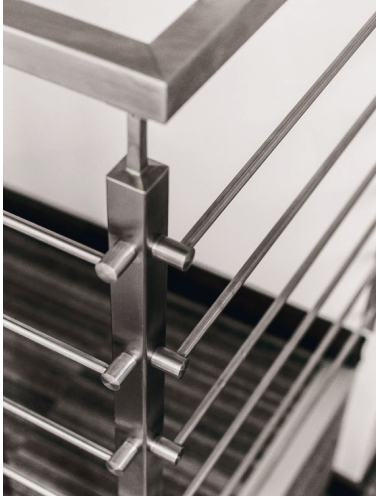
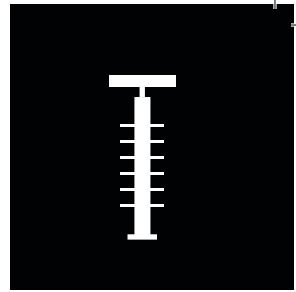


Height	1100 mm
Post ∅	42.4 mm
Glass thickness	10 - 17.52 mm
Material	Stainless steel
Surface finish	Satin



RAILINGS

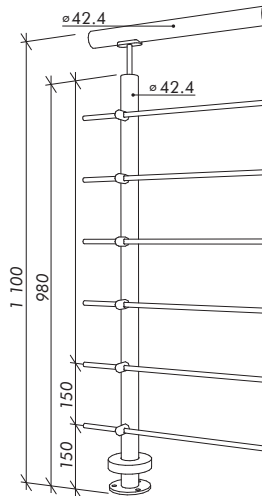
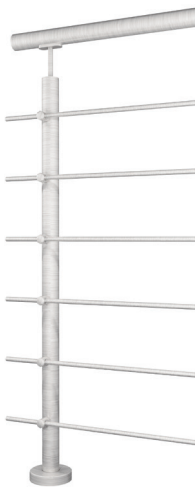
stainless steel | bars



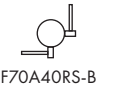
POSTS FOR BARS



Height	1100 mm
Post □	40 x 40 mm
Crossbar Ø	12 mm
Material	Stainless steel
Surface finish	Satin



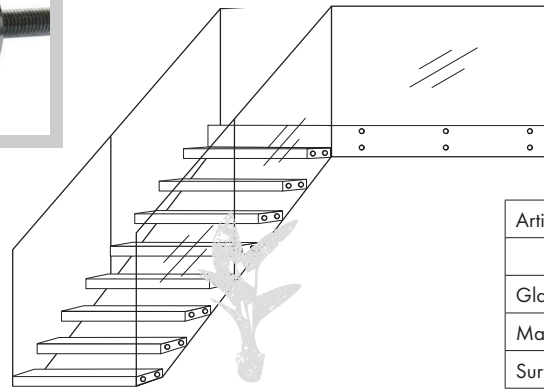
POSTS FOR BARS



Height	1100 mm
Post Ø	42.4 mm
Crossbar Ø	12 mm
Material	Stainless steel
Surface finish	Satin



RAILINGS glass



point fixings for glass

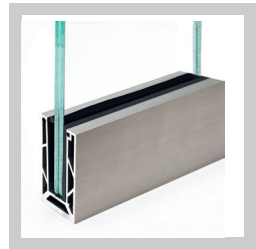
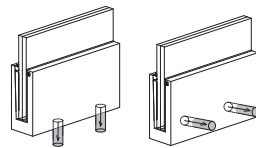
Article	FP750264
Ø	30 - 50 mm
Glass thickness	10 - 18 mm
Material	Stainless steel
Surface finish	Satin



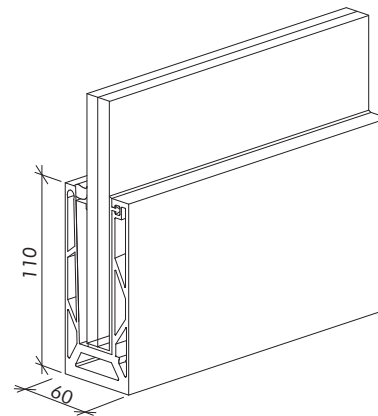
FIXING TYPES

top fixed
FI780001-T

side fixed
FI780001-S



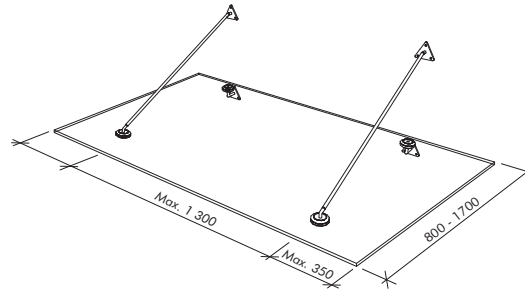
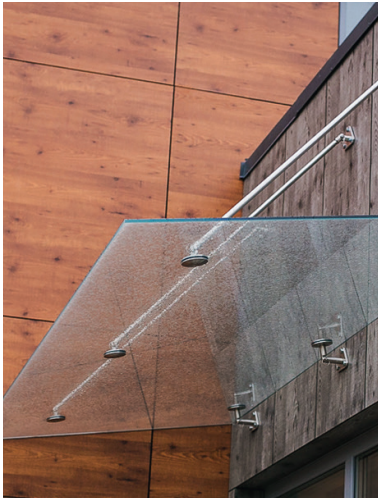
aluminium profile



Article	FI780001
Height	110 mm
Width	60 mm
Length	3 m
Glass thickness	10 - 21.5 mm
Material	Anodized aluminium
Surface finish	Satin

The glass canopy is hanged in with tension rods. Length of tension rod is adjusted according to a depth of glass 800-1700 mm from the wall. 6+6+1.52 or 8+8+1.52 tempered and laminated glass. The load-bearing capacity of the system meets requirements of the Nordic climate.

glass CANOPY

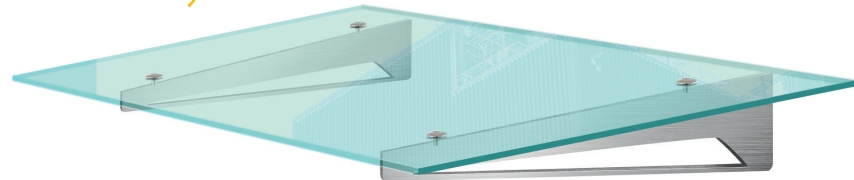
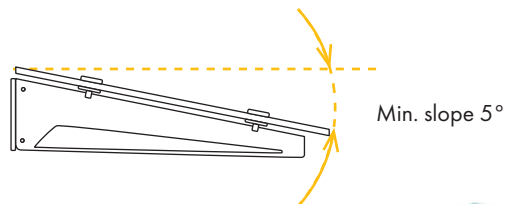
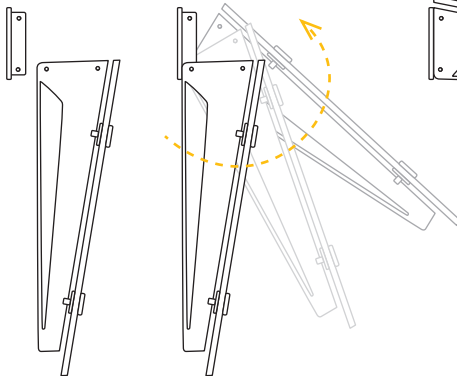


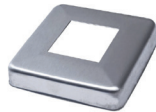
on tension rods

Depth	800 - 1700 mm
Glass	tempered, laminated
Glass thickness	10 - 24 mm
Material	Stainless steel, tempered glass
Surface finish	Satin

HANG UP | LIFT UP | SECURE

in development





FP750256	FP750257	FP750254	FP750252
Base plate, 100X100X6mm for post 40X40mm, SST, satin	Base cup, 108X108X22mm for post 40X40mm, SST, satin	Base plate, D100X6mm for post d42.4 mm, SST, satin	Base cup, D105X20mm for post d=42.4mm, SST, satin



F0740220	F0740221	FP740241	FP740244
Glass holder (10 - 12 mm), SST, satin	Glass holder (10 - 12 mm) for D42.4mm, SST, satin	Crossbar holder adjustable d12mm, SST, satin	Crossbar holder adjustable d12mm, for D42.4mm, SST, satin



FP750258	FP730237	FP750259	FP720230
End cap for post, 40X40mm, M8, SST, satin	End cap for post, D42.4mm, M8, SST, satin	Handrail holder - without saddle D12mm, 75mm, M8(external), M6 (internal), SST, satin	Handrail holder - adjustable for D42.4, d12mm, 75mm, M8, SST, satin

for RAILINGS

* SST - Stainless steel, AISI 304 or 316 on request

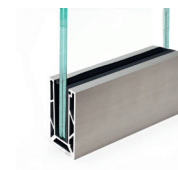
* AL - Aluminium

The look and functionality of stainless steel is the main reason of it's popularity within interior and exterior details. This is extremely aesthetic and also save solution, elegance and sophisticated touch of quality

for RAILINGS



FP750260	FP750261	FP750262	FP750263
Handrail bracket, D85mm, d42.4mm, SST, satin	Handrail connector 90°, d42.4 x2mm, SST, satin	Handrail holder - saddle 64X24mm, for handrail d42.4mm, SST, satin	Handrail holder - saddle 43X24mm 90°, d42.4mm, SST, satin



FP750264	FP750265	FP750266	FI780001
Glass point fixes, D30mm, for glass (6 - 18mm), SST, satin	Glass point fixes, 170X50mm D30mm, for glass (6-18mm), SST, satin	Glass holder, D105mm, d51mm, 160mm, for glass (10-12mm), SST, satin	Glass railing profiles, 60X110mm, for glass (10-21.5mm), length 3m, AL, satin

for CANOPIES



F0400304	F0400305	F0400306	F0400307
Canopy anchoring (wall/glass) D80mm, for glass (12-24mm), SST, satin	Canopy glass clamp, D 80mm, for glass (12-24mm), SST, satin	Canopy anchoring for tension rod, SST, satin	Tension rod, D20, M10 (internal), SST, satin

* SST - Stainless steel, AISI 304 or 316 on request
* AL - Aluminium



Your ideas | our solution

The end of 20th century is dated as a beginning of synergy between glass and stainless steel highly appreciated by hi-tech and minimalism followers. Due to this successful combination of glass and steel and its ability to create unlimited and permanent light energy in space it has been more and more applied in other interior and exterior styles.

STARPSIENU CENTRS LTD

www.starpsienas.lv

CONTACT

Phone: +371 67614669

E-mail: starpsienas@starpsienas.lv

FOLLOW

www.starpsienas.lv

fb.com/Starpsienas

instagram.com/starpsienas.lv

www.starpsienas.lv